

REDUCED-SPEED SCHOOL ZONE

By-Law No.31-2017

WHEREAS:

- A. Section 98.1 of the Highway Traffic Act and the Reduced-Speed School Zones Regulation No.136/2013 authorize a council to pass by-laws establishing the reduced maximum permitted speed for vehicles being driven on a highway within a school zone within the geographic boundaries of a municipality; and
- B. *The Municipality of Norfolk Treherne* deems it advisable and in the best interests of the *Municipality* to establish school zones with a reduced maximum speed for vehicles.

NOW THEREFORE the Council of *the Municipality of Norfolk Treherne* enacts as a by-law the following:

- 1. This By-law may be called the "Reduced-Speed School Zone By-law".

Interpretation

- 2. For the purposes of this By-law, "highway", "reduced-speed school zone", "school", "school property", "traffic control device", and "vehicle" have the same meanings as set out in the Highway Traffic Act and the Reduced-Speed School Zones Regulation No. 136/2013.

Reduced-speed school zones

- 3. The following portions of highways are designated as reduced-speed school zones with reduced maximum permitted speed:

- a. Name of schools:
Treherne Elementary School, 224 Andrews Ave., Treherne; and
Treherne Collegiate, 376 South Street, Treherne

Highways included in the reduced-speed school zone:

- i. *That portion of South Street beginning at the point where the northern boundary of Andrews Avenue meets South Street and continuing in a southerly direction and ending at the point where the eastern boundary of Ennis Crescent meets South Street;*

- ii. *That portion of Andrews Avenue beginning at the point where the western boundary of South Street meets Andrews Avenue and continuing in a westerly direction and ending at the point where the eastern boundary of Vanzile Street meets Andrews Avenue.*

Maximum permitted speed within reduced-speed school zones

4. The maximum permitted speed for vehicles being driven in a reduced-speed school zone on a highway is 30 km/h.

Times when the reduced-speed school zones apply

5. *The reduced maximum permitted speeds established under section 4 apply within a reduced-speed school zone from 8:00 a.m. to 6:00 p.m., Monday to Friday from September 1 through to and including June 30.*

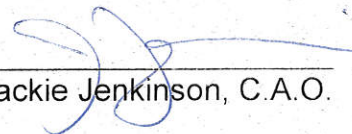
Traffic control devices

6. The Municipality shall identify a reduced-speed school zone with traffic control devices that comply with the Reduced-Speed School Zones Regulation No. 136/2013.

DONE AND PASSED by the Council of the Municipality of Norfolk Treherne, assembled at Treherne, Manitoba on the 9 day of May, 2017.



Craig Spencer, Reeve

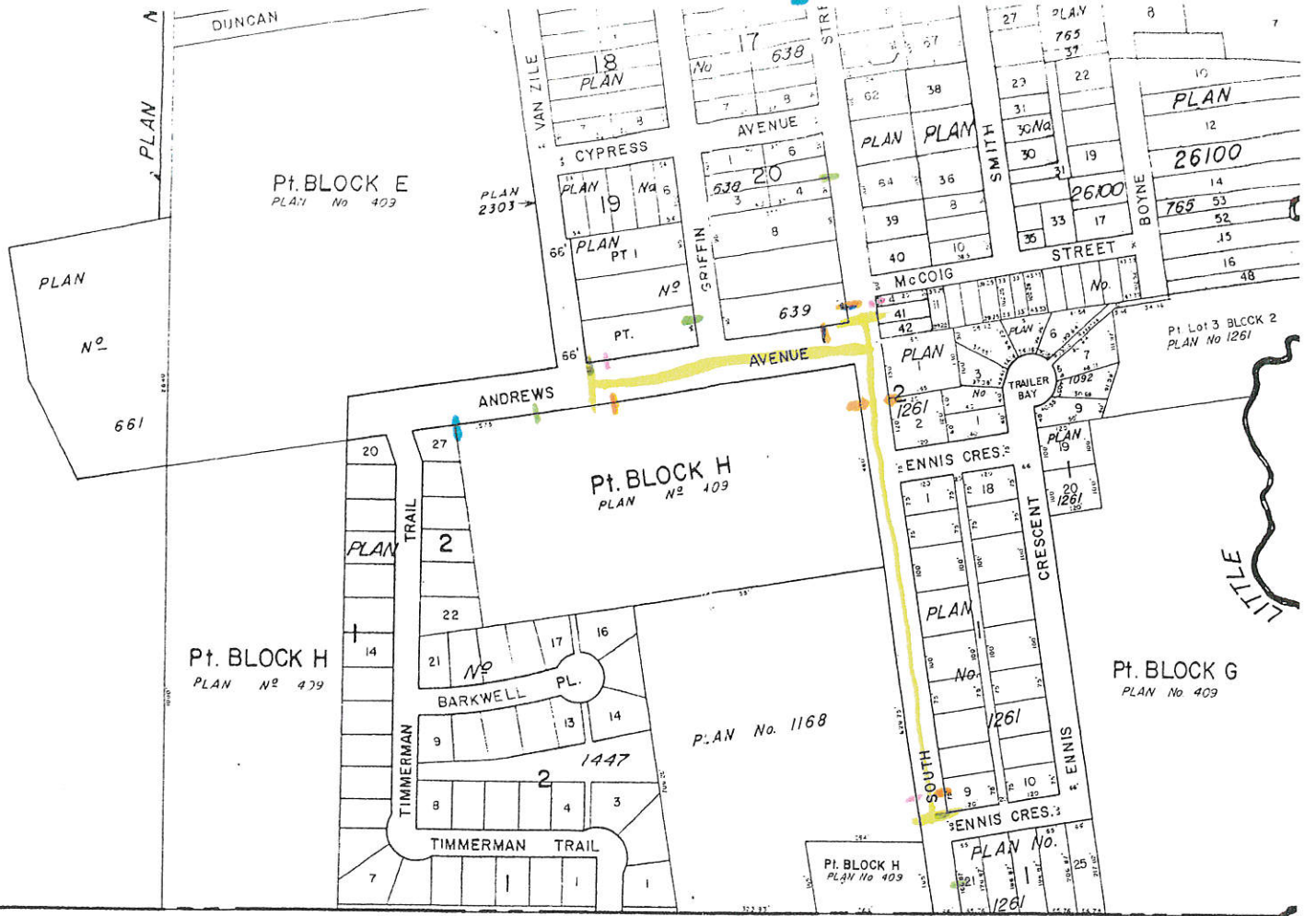


Jackie Jenkinson, C.A.O.

Read a first time this 10 day of April, 2017.

Read a second time this 9 day of May, 2017.

Read a third time and passed this 9 day of May, 2017.



N. W. 1/4 SEC. 36
TWP. 7 RGE. 10 W.P.M.

N. E. 1/4 SEC. 3
TWP. 7 RGE. 10 W.P.I

- Max 30 — 5
- 30 ahead — 2
- School zone — 4
- Ends — 3
- Total school zone area —

14-signs

REHERNE